



GOLDHURST MANSIONS  
GOLDHURST TERRACE  
SWISS COTTAGE  
NW6 3HY

**PRICE: £4,350 PCM**

UNFURNISHED

We are pleased to offer this enormous four-bedroom mansion apartment which was recently refurbished.

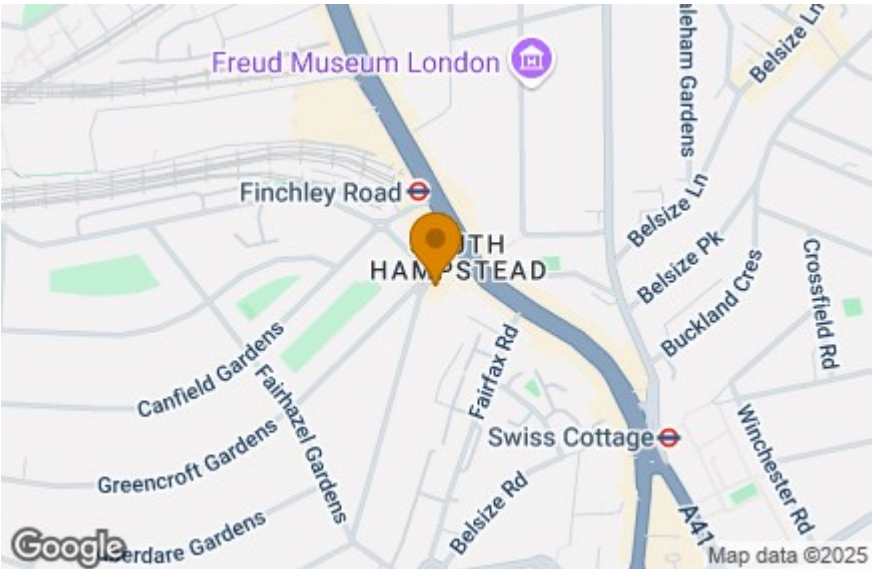
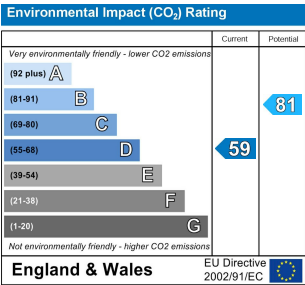
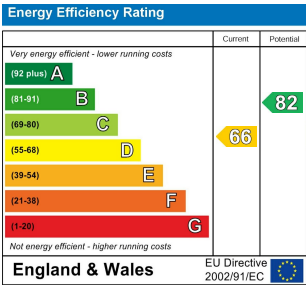
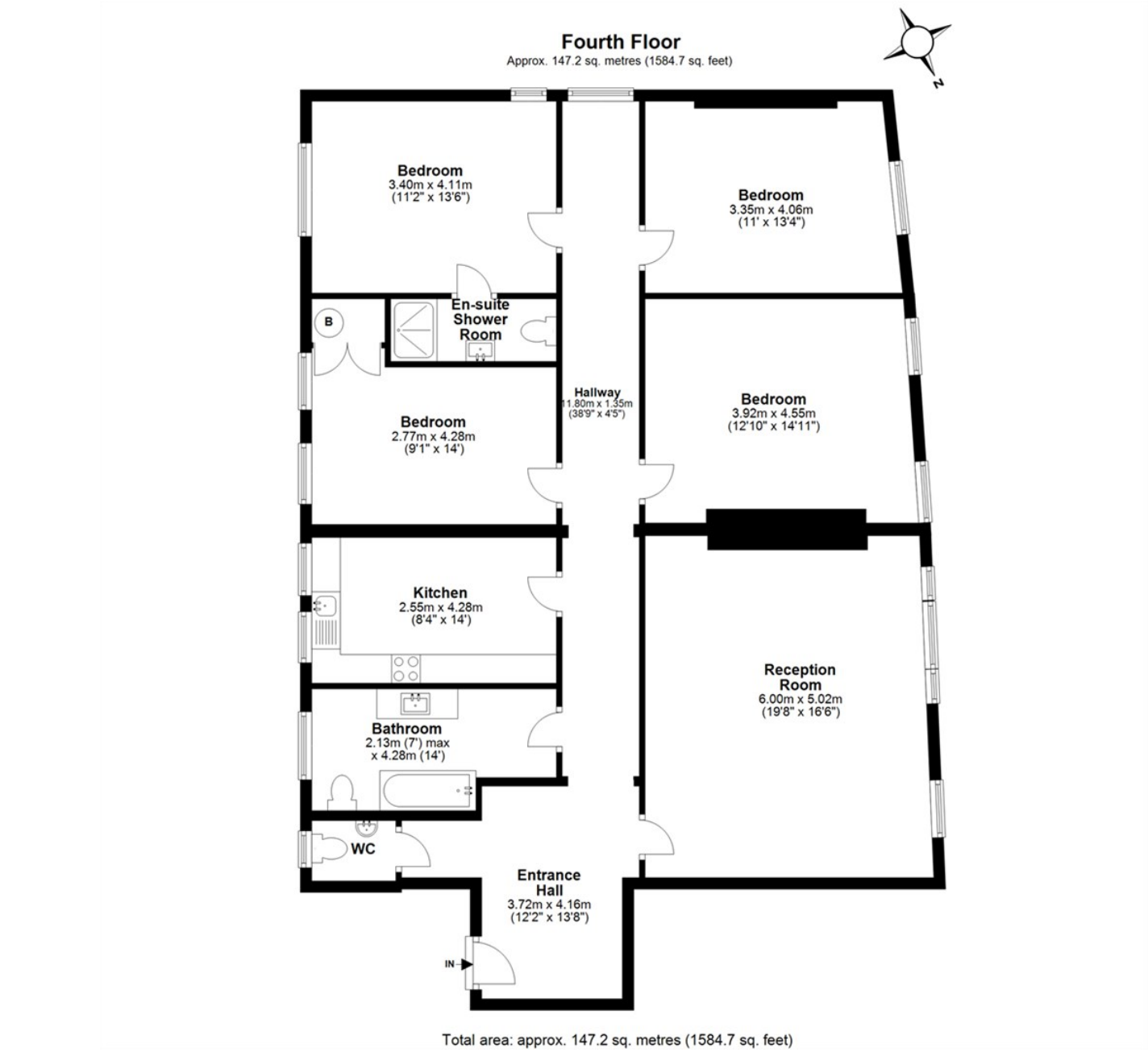
Set within a well maintained Victorian Mansion block with passenger lift and Communal Garden the flat is on the 4th floor, entered via a large hallway and all rooms are spacious with high ceilings, 4 bedrooms' a luxury bathroom and en suite shower room, and guest WC. Large reception room a luxurious modern kitchen.

Located within a 1-minute walk to Finchley Road tube station and shopping facilities. A very large rarely available four bed roomed apartment in the heart of the much sought-after South Hampstead.

Must be seen



FEATURES:



**IMPORTANT NOTICE**

Whilst every attempt has been made to ensure the accuracy of these details and floor plans contained here, measurements of doors, windows and rooms are approximate and no responsibility is taken for any error, omission or misstatement. These plans and details are for representation only as defined by RICS code of measuring practice and should be used as such by any prospective tenant. Not to scale. Copyright: RHW Estates